

PARSIFAL III



PARSIFAL III sets new standards in sailing excellence whilst maintaining levels of comfort and offering amenities rarely found on a sailing yacht. The clean lines of her aluminium hull, carbon fibre rig and in-furling boom guarantee that she offers a sailing experience that is incomparable. She is the fastest Perini launched and her speed is only exceeded by the level of luxury she offers. The sleek lines of her jet-black hull contrast against the brilliant white of her superstructure making her remarkable as truly the forerunner in a new era of Perini Navi design.

In perfect harmony with her striking exterior, her interior was designed by the world famous Remi Tessier and is a magnificent blend of dark ebony, wenge and light sycamore with stainless steel and fine leather accents. The craftsmanship is exquisite and is complemented by natural textures and textiles that give this ultra modern yacht a warm, inviting and restful feeling.



PERINI NAVI














PERINI YACHT





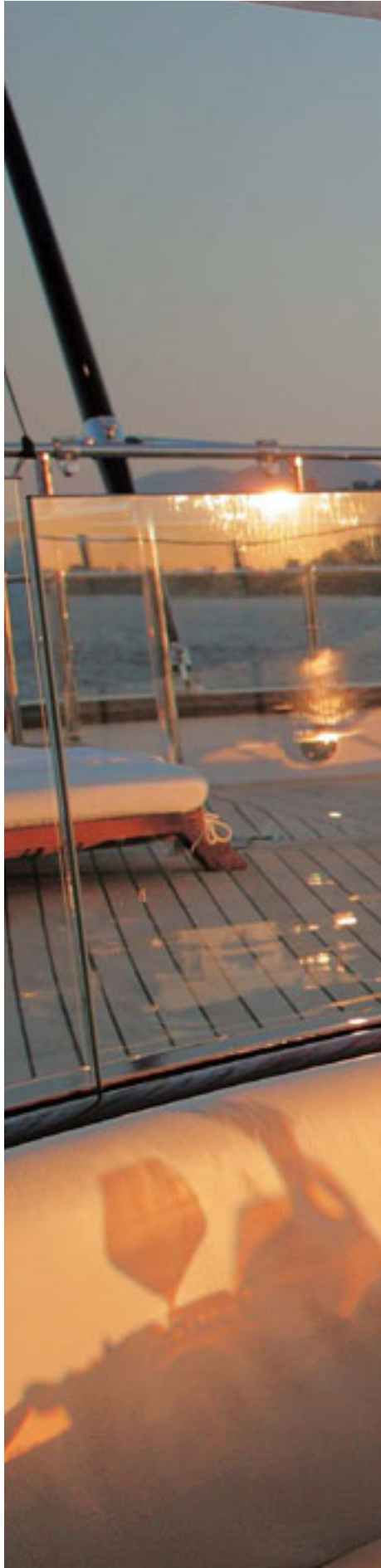




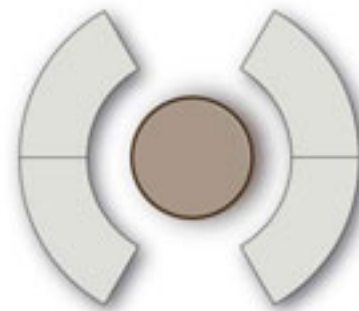
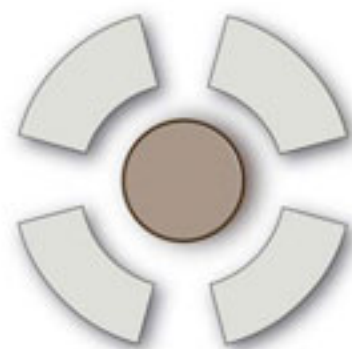






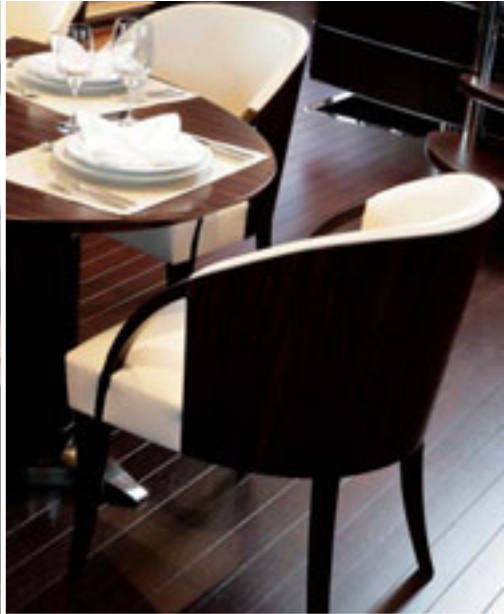


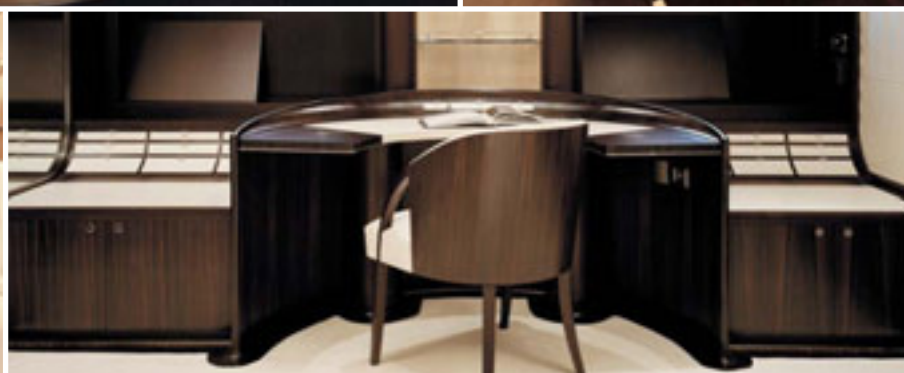
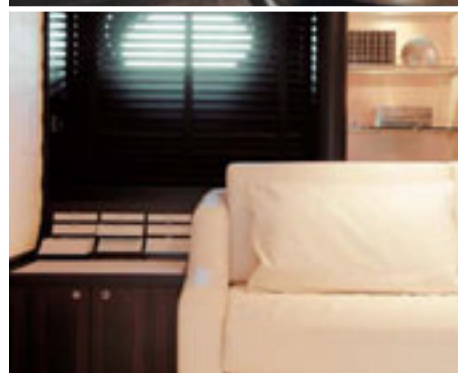
























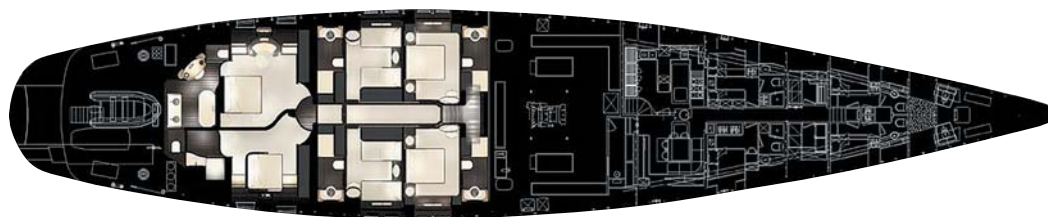
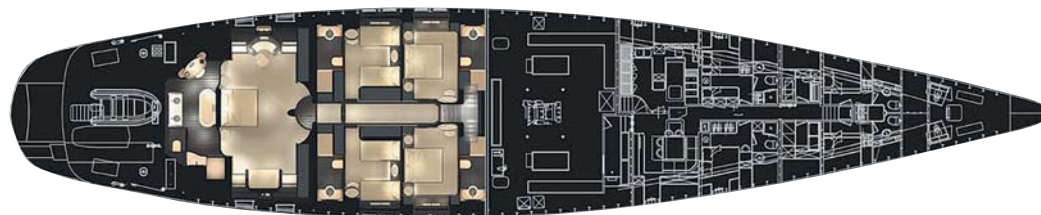
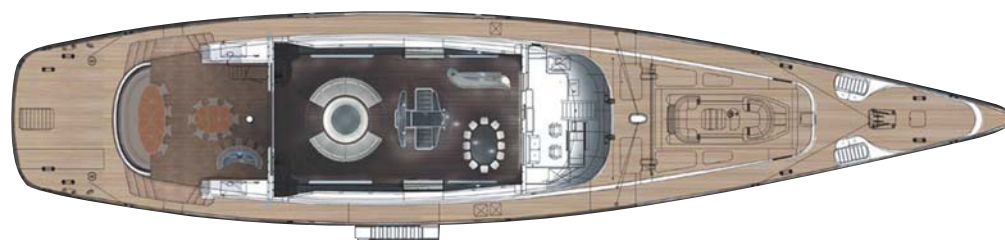


MAIN FEATURES AND PERFORMANCE

LENGTH OVERALL	.177'/54M
WATERLINE LENGTH (FULL LOAD)	.44,1M
BEAM	.35'/10.72M
DRAFT	.14,8'/4.5M
MAXIMUM DISPLACEMENT	.438T
GROSS REGISTER TONNAGE	.460T
SPEED AT MAXIMUM CONTINUOUS RATING	.14.5 KNOTS
SPEED MAX.	.16 KNOTS
SPEED UNDER SAIL, BEST CONDITIONS	.18 KNOTS
RANGE AT 13 KNOTS	.3400 NM
FUEL CAPACITY	.48,000 LT
HEIGHT OF MAST (FROM TOP MASTHEAD TO DESIGN WATER LINE)	.60.00 M
HEIGHT OF MIZZEN MAST	.46.45 M
TOTAL SAIL AREA	.2,964 M ²
MPS SAIL AREA	.1,000 M ²
REACHER, GENOA/BLADE, STAYSAIL, MAIN, MIZZEN SAIL AREA	.1,605 M ²
TOTAL DECK AREA	.397 M ²
FLYING BRIDGE AREA	.63 M ²
COCKPIT AREA	.42 M ²
LAZARETTE AREA	.32 M ²
TOTAL FLOOR AREA	.485 M ²
LENGTH OF FLYING BRIDGE	.16 M
WIDTH OF FLYING BRIDGE	.4.3 M
TOTAL SALOON, DINING, AND WHEELHOUSE AREA	.115 M ²
TOTAL OWNER AND GUEST CABIN AREA	.143 M ²
TOTAL CREW AREA AND CREW SERVICE	.90 M ²
ENGINE	.1,500 HP CATERPILLAR
CLASSIFICATION	.MCA CODE OF PRACTICE, A.B.S. .A1 YACHTING SERVICE-AMS, MALTA CROSS X
FLAG	.ENGLISH
REGISTRATION	.LONDON
LAUNCHED	.2004
DELIVERY	.2004
GENERAL	.DESIGN PERINI NAVI
INTERIOR	.DESIGN RÉMI TESSIER
NAVAL DESIGN, HULL	.RON HOLLAND, WING KEEL
BUILDER	.PERINI NAVI SHIPYARD, VIAREGGIO, ITALY
SAILMAKER	.NORTH SAILS, ITALY
SAIL SYSTEM	.AUTOMATED, PERINI
PROPELLER	.HUNDESTED, VARIABLE PITCH

ENTERTAINMENT

- 23' GUEST TENDER + 16' TENDER
- 2 X SEADOO WAVERUNNERS RXP 215HP
- 6 SCUBA DIVING BOTTLES
- WATER SKIS AND TOWABLE TOYS
- JACUZZI X 2
- DVD HIGH DEFINITION AND HIGH RESOLUTION TV, LIBRARY
- ADVANCED SOUND SYSTEM
- WIRELESS E-MAIL
- TEPPANYAKI BBQ AFT DECK, CHARCOAL BBQ FLY BRIDGE



AWARDS

World Superyacht Awards 2006 - Boat International Group:

Winner - Superyacht of the Year (Sail)

Winner - Best Interior Design / Remi Tessier

Winner - Sailing Yacht - 51 Metres and Above

ShowBoats International Awards 2006:

Winner - Best Interior Design

Winner - Best Over All Yacht





www.parsifal-3.com